

SPOOKY TUNES

1. SHARK ATTACK!

Two staves of music in 4/4 time. The first staff begins with a double bar line and repeat sign. The melody consists of quarter notes and eighth notes with rests, creating a rhythmic pattern. The second staff continues the melody with eighth notes and quarter notes.

2. ADDAMS FAMILY THEME SONG

Two staves of music in 4/4 time with a key signature of one flat. The melody features triplet eighth notes and quarter notes. The first staff includes the instruction "FINGER SNAPS" above the notes. The second staff continues the triplet pattern.

3. SKIN AND BONES

Two staves of music in 6/8 time with a key signature of one flat. The melody is composed of eighth and quarter notes, with a final note in the second staff tied to the first staff.

4. FUNERAL MARCH

Three staves of music in 4/4 time with a key signature of one flat. The melody is a steady eighth-note pattern, characteristic of a funeral march.

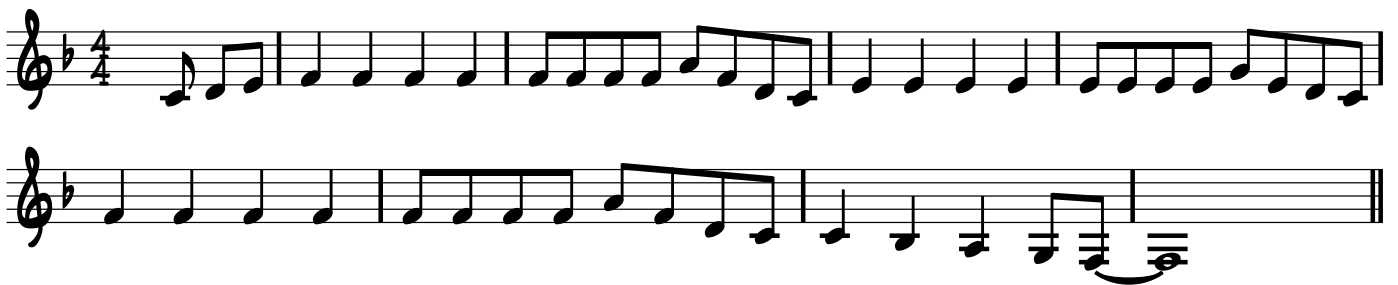
5. IN THE HALL OF THE MOUNTAIN KING



6. WITCH DOCTOR



7. PURPLE PEOPLE EATER



8. THIS IS HALLOWEEN FROM "THE NIGHTMARE BEFORE CHRISTMAS"



9. DANSE MACABRE

THEME 1

Musical notation for Theme 1 of Danse Macabre, featuring a treble clef and a 3/4 time signature. The melody consists of a series of eighth and quarter notes, starting with a half rest followed by a dotted quarter note, and ending with a double bar line.

THEME 2

Musical notation for Theme 2 of Danse Macabre, featuring a treble clef. The melody consists of a series of eighth and quarter notes, starting with a half rest followed by a dotted quarter note, and ending with a double bar line.

Musical notation for Theme 3 of Danse Macabre, featuring a treble clef and a key signature of one flat. The melody consists of a series of eighth and quarter notes, starting with a half rest followed by a dotted quarter note, and ending with a double bar line.

THEME 3

Musical notation for Theme 4 of Danse Macabre, featuring a treble clef. The melody consists of a series of quarter and eighth notes, starting with a half rest followed by a dotted quarter note, and ending with a double bar line.

Musical notation for Theme 5 of Danse Macabre, featuring a treble clef and a key signature of one sharp. The melody consists of a series of quarter and eighth notes, starting with a half rest followed by a dotted quarter note, and ending with a double bar line.

Musical notation for Theme 6 of Danse Macabre, featuring a treble clef. The melody consists of a series of quarter and eighth notes, starting with a half rest followed by a dotted quarter note, and ending with a double bar line.

THEME 4

Musical notation for Theme 7 of Danse Macabre, featuring a treble clef. The melody consists of a series of eighth and quarter notes, starting with a half rest followed by a dotted quarter note, and ending with a double bar line.

10. GHOSTBUSTERS THEME SONG

Musical notation for the Ghostbusters Theme Song, first staff, featuring a treble clef and a 4/4 time signature. The melody consists of a series of quarter and eighth notes, starting with a half rest followed by a dotted quarter note, and ending with a double bar line.

Musical notation for the Ghostbusters Theme Song, second staff, featuring a treble clef. The melody consists of a series of quarter and eighth notes, starting with a half rest followed by a dotted quarter note, and ending with a double bar line.

Musical notation for the Ghostbusters Theme Song, third staff, featuring a treble clef. The melody consists of a series of quarter and eighth notes, starting with a half rest followed by a dotted quarter note, and ending with a double bar line.

Musical notation for the Ghostbusters Theme Song, fourth staff, featuring a treble clef. The melody consists of a series of quarter and eighth notes, starting with a half rest followed by a dotted quarter note, and ending with a double bar line.

11. DING DONG THE WITCH IS DEAD (WIZARD OF OZ)

Musical notation for 'Ding Dong the Witch is Dead' (Wizard of Oz). The piece is in 4/4 time and B-flat major. It consists of two staves. The first staff begins with a double bar line and repeat sign. The melody is simple and rhythmic, using quarter and eighth notes. The second staff provides a bass line with a mix of quarter and half notes, ending with a fermata.

12. THRILLER

Musical notation for 'Thriller'. The piece is in 4/4 time and B-flat major. It consists of six staves. The first four staves show a complex melody with many eighth and sixteenth notes. The fifth and sixth staves feature a bass line with chords, some marked with 'v' and 'vco' (vibrato and vibrato control). The piece ends with a fermata on the final note.

13. HEDWIG'S THEME FROM HARRY POTTER

Musical notation for 'Hedwig's Theme' from Harry Potter. The piece is in 3/4 time and D major. It consists of four staves. The melody is characterized by its distinctive three-quarter time signature and the use of natural and flat accidentals. The piece ends with a fermata on the final note.

14. THE MUNSTERS THEME SONG

Musical notation for 'The Munsters Theme Song' in 4/4 time. The piece is in B-flat major (one flat). The melody consists of four staves of music. The first staff begins with a treble clef, a key signature of one flat, and a 4/4 time signature. The melody features eighth and quarter notes, with some rests. The second staff continues the melody with similar rhythmic patterns. The third staff shows a change in the melodic line, including a half note and a quarter note. The fourth staff concludes the piece with a final quarter note and a double bar line.

Musical notation for 'The Munsters Theme Song' in 3/4 time. The piece is in B-flat major (one flat). The melody consists of two staves of music. The first staff begins with a treble clef, a key signature of one flat, and a 3/4 time signature. The melody features dotted quarter notes and eighth notes. The second staff continues the melody with similar rhythmic patterns, ending with a double bar line.

16. SPOOKY SCARY SKELETONS

Musical notation for 'Spooky Scary Skeletons' in 6/8 time. The piece is in B-flat major (one flat). The melody consists of two staves of music. The first staff begins with a treble clef, a key signature of one flat, and a 6/8 time signature. The melody features dotted quarter notes and eighth notes. The second staff continues the melody with similar rhythmic patterns, ending with a double bar line.