

SPOOKY TUNES

1. SHARK ATTACK!

Musical notation for 'SHARK ATTACK!' in G major, 4/4 time. The piece consists of two staves. The first staff begins with a double bar line and repeat sign. The melody features a series of quarter notes and rests, with a descending line in the second measure. The second staff continues the melody with eighth notes and quarter notes, ending with a double bar line.

2. ADDAMS FAMILY THEME SONG

Musical notation for 'ADDAMS FAMILY THEME SONG' in B-flat major, 4/4 time. The piece consists of two staves. The first staff features a melody with eighth notes and quarter notes, including a triplet of eighth notes and a section labeled 'FINGER SNAPS' with 'x' marks. The second staff continues the melody with similar rhythmic patterns, ending with a double bar line.

3. SKIN AND BONES

Musical notation for 'SKIN AND BONES' in B-flat major, 6/8 time. The piece consists of two staves. The first staff begins with a quarter rest followed by eighth notes and quarter notes. The second staff continues the melody with eighth notes and quarter notes, ending with a double bar line.

4. FUNERAL MARCH

Musical notation for 'FUNERAL MARCH' in B-flat major, 4/4 time. The piece consists of three staves. The first staff features a steady eighth-note melody. The second and third staves continue this rhythmic pattern, ending with a double bar line.

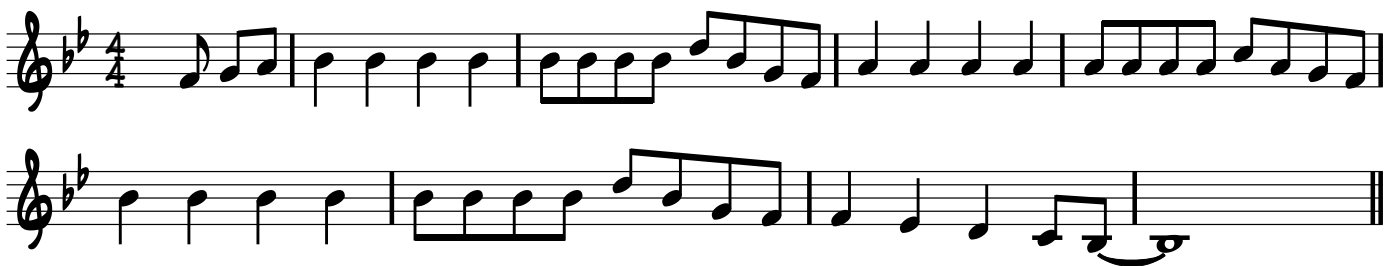
5. IN THE HALL OF THE MOUNTAIN KING



6. WITCH DOCTOR



7. PURPLE PEOPLE EATER



8. THIS IS HALLOWEEN FROM "THE NIGHTMARE BEFORE CHRISTMAS"



9. DANSE MACABRE

THEME 1

Musical notation for Theme 1 of 'Danse Macabre'. It is written on a single staff in treble clef, 3/4 time, with a key signature of one flat (B-flat). The piece begins with a forte (f) dynamic marking. The melody consists of a series of quarter and eighth notes, with some notes marked with accents.

THEME 2

Musical notation for Theme 2 of 'Danse Macabre'. It is written on two staves in treble clef, 3/4 time, with a key signature of one flat. The first staff begins with a piano (p) dynamic marking. The melody is characterized by a steady eighth-note rhythm with various accents and slurs.

THEME 3

Musical notation for Theme 3 of 'Danse Macabre'. It is written on two staves in treble clef, 3/4 time, with a key signature of one flat. The melody is primarily composed of quarter notes, with some chromatic movement and a final cadence.

THEME 4

Musical notation for Theme 4 of 'Danse Macabre'. It is written on a single staff in treble clef, 3/4 time, with a key signature of one flat. The melody features eighth-note patterns and a final cadence.

10. GHOSTBUSTERS THEME SONG

Musical notation for the 'Ghostbusters Theme Song'. It is written on four staves in treble clef, 4/4 time, with a key signature of one flat. The melody is a well-known sequence of eighth and quarter notes, with various slurs and accents throughout.

11. DING DONG THE WITCH IS DEAD (WIZARD OF OZ)

Musical notation for 'Ding Dong the Witch is Dead' (Wizard of Oz). The piece is in 4/4 time and B-flat major. It consists of two staves. The first staff contains the first four measures, and the second staff contains the next four measures, ending with a double bar line and repeat dots.

12. THRILLER

Musical notation for 'Thriller'. The piece is in 4/4 time and B-flat major. It consists of seven staves. The first six staves contain the main melody and accompaniment, with the accompaniment featuring 'vaco' markings. The seventh staff concludes the piece with a double bar line.

13. HEDWIG'S THEME FROM HARRY POTTER

Musical notation for 'Hedwig's Theme' from Harry Potter. The piece is in 3/4 time and B-flat major. It consists of four staves. The first staff begins with a whole rest followed by the first measure. The subsequent staves continue the melody and accompaniment, ending with a double bar line.

14. THE MUNSTERS THEME SONG

Musical score for 'The Munsters Theme Song' in G minor, 4/4 time. The score consists of three staves of music. The first staff begins with a treble clef, a key signature of two flats (B-flat and E-flat), and a 4/4 time signature. The melody starts on a half note G4, followed by quarter notes A4, B-flat4, and C5. The second staff continues the melody with quarter notes D5, E-flat5, F5, and G5, followed by a quarter rest and a half note G5. The third staff continues with quarter notes A5, B-flat5, and C6, followed by a quarter rest and a half note G5. The piece concludes with a double bar line.

15. LUIGI'S MANSION 3 MAIN THEME

Musical score for 'Luigi's Mansion 3 Main Theme' in G minor, 3/4 time. The score consists of two staves of music. The first staff begins with a treble clef, a key signature of two flats (B-flat and E-flat), and a 3/4 time signature. The melody starts with a dotted half note G4, followed by quarter notes A4, B-flat4, and C5. The second staff continues with quarter notes D5, E-flat5, F5, and G5, followed by a quarter rest and a half note G5. The piece concludes with a double bar line.

16. SPOOKY SCARY SKELETONS

Musical score for 'Spooky Scary Skeletons' in G minor, 6/8 time. The score consists of two staves of music. The first staff begins with a treble clef, a key signature of two flats (B-flat and E-flat), and a 6/8 time signature. The melody starts with a dotted half note G4, followed by quarter notes A4, B-flat4, and C5. The second staff continues with quarter notes D5, E-flat5, F5, and G5, followed by a quarter rest and a half note G5. The piece concludes with a double bar line.