

# SPOOKY TUNES

## 1. SHARK ATTACK!

Two staves of music in bass clef, 4/4 time, key of B-flat major. The first staff begins with a repeat sign. The melody consists of quarter notes and eighth notes with rests, creating a rhythmic pattern.

## 2. ADDAMS FAMILY THEME SONG

Two staves of music in bass clef, 4/4 time, key of B-flat major. The first staff includes a triplet of eighth notes and a section labeled 'FINGER SNAPS' with 'x' marks. The second staff continues the melody with triplets and eighth notes.

## 3. SKIN AND BONES

Two staves of music in bass clef, 6/8 time, key of B-flat major. The melody is characterized by eighth notes and quarter notes, with a final quarter rest on the second staff.

## 4. FUNERAL MARCH

Three staves of music in bass clef, 4/4 time, key of B-flat major. The melody is a steady eighth-note pattern, typical of a funeral march.

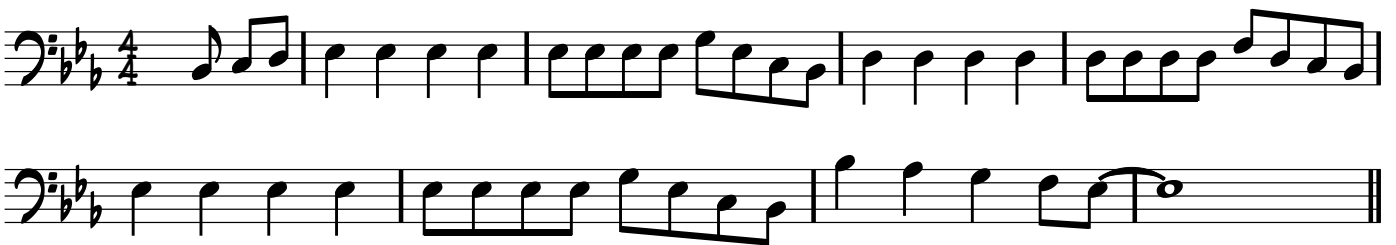
## 5. IN THE HALL OF THE MOUNTAIN KING



## 6. WITCH DOCTOR



## 7. PURPLE PEOPLE EATER



## 8. THIS IS HALLOWEEN FROM "THE NIGHTMARE BEFORE CHRISTMAS"





## 11. DING DONG THE WITCH IS DEAD (WIZARD OF OZ)

Two staves of musical notation in bass clef, 4/4 time, key of B-flat major. The first staff begins with a double bar line and repeat sign. The melody consists of quarter and eighth notes. The second staff continues the melody, ending with a double bar line and repeat sign.

## 12. THRILLER

Five staves of musical notation in bass clef, 4/4 time, key of B-flat major. The first two staves feature a melodic line with eighth and sixteenth notes. The third and fourth staves show a more rhythmic pattern with eighth notes and rests. The fifth staff includes chords with accents and a final melodic phrase.

## 13. HEDWIG'S THEME FROM HARRY POTTER

Four staves of musical notation in bass clef, 3/4 time, key of B-flat major. The melody is characterized by long, sweeping eighth-note lines with various accidentals (sharps, naturals, flats) and ties, creating a haunting and ethereal atmosphere.

## 14. THE MUNSTERS THEME SONG

Musical notation for 'The Munsters Theme Song' in bass clef, 4/4 time, key of B-flat major. The piece consists of three staves of music. The first staff begins with a treble clef and a 4/4 time signature, followed by a key signature of two flats (B-flat major). The melody is written in bass clef. The second and third staves continue the melody in bass clef.

## 15. LUIGI'S MANSION 3 MAIN THEME

Musical notation for 'Luigi's Mansion 3 Main Theme' in bass clef, 3/4 time, key of B-flat major. The piece consists of two staves of music. The first staff begins with a treble clef and a 3/4 time signature, followed by a key signature of two flats (B-flat major). The melody is written in bass clef. The second staff continues the melody in bass clef.

## 16. SPOOKY SCARY SKELETONS

Musical notation for 'Spooky Scary Skeletons' in bass clef, 6/8 time, key of B-flat major. The piece consists of two staves of music. The first staff begins with a treble clef and a 6/8 time signature, followed by a key signature of two flats (B-flat major). The melody is written in bass clef. The second staff continues the melody in bass clef.