

ALTO SAXOPHONE

# SPOOKY TUNES

## 1. SHARK ATTACK!

Two staves of music in 4/4 time with a key signature of one sharp (F#). The first staff begins with a double bar line and repeat sign. The melody consists of quarter and eighth notes with rests, creating a rhythmic pattern that suggests a shark's movement.

## 2. ADDAMS FAMILY THEME SONG

Two staves of music in 4/4 time with a key signature of one sharp (F#). The melody features triplet eighth notes and quarter notes. Above the first staff, the text "FINGER SNAPS" is written above two quarter notes marked with an 'x', indicating a performance instruction.

## 3. SKIN AND BONES

Two staves of music in 6/8 time with a key signature of one sharp (F#). The melody is characterized by eighth and quarter notes, with a prominent eighth-note triplet in the first measure.

## 4. FUNERAL MARCH

Three staves of music in 4/4 time with a key signature of one sharp (F#). The melody is a somber march consisting of quarter and eighth notes, with a steady, rhythmic progression.

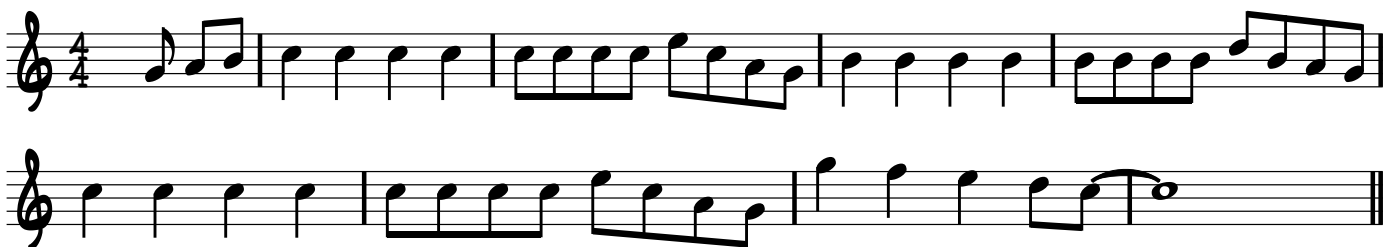
## 5. IN THE HALL OF THE MOUNTAIN KING



## 6. WITCH DOCTOR



## 7. PURPLE PEOPLE EATER



## 8. THIS IS HALLOWEEN FROM "THE NIGHTMARE BEFORE CHRISTMAS"



## 9. DANSE MACABRE

## THEME 1



## THEME 2



## THEME 3



## THEME 4



## 10. GHOSTBUSTERS THEME SONG



4 11. DING DONG THE WITCH IS DEAD (WIZARD OF OZ)

Two staves of musical notation in G major and 4/4 time. The first staff begins with a repeat sign and contains the melody: G4 (quarter), A4 (quarter), B4 (quarter), A4-G4 (beamed eighth notes), F#4 (quarter), E4 (quarter), D4 (quarter), C4 (quarter). The second staff continues the melody: G4 (quarter), A4 (quarter), B4 (quarter), A4-G4 (beamed eighth notes), F#4 (quarter), E4 (quarter), D4 (quarter), C4 (quarter), followed by a double bar line and repeat sign.

12. THRILLER

Five staves of musical notation in G major and 4/4 time. The first staff starts with a whole rest followed by a quarter rest, then the melody: A4 (quarter), B4 (quarter), A4-G4 (beamed eighth notes), F#4 (quarter), E4 (quarter), D4 (quarter), C4 (quarter). The second staff continues: G4 (quarter), A4 (quarter), B4 (quarter), A4-G4 (beamed eighth notes), F#4 (quarter), E4 (quarter), D4 (quarter), C4 (quarter). The third staff continues: D4 (quarter), E4 (quarter), F#4 (quarter), G4 (quarter), A4 (quarter), B4 (quarter), A4-G4 (beamed eighth notes), F#4 (quarter), E4 (quarter), D4 (quarter), C4 (quarter). The fourth staff continues: D4 (quarter), E4 (quarter), F#4 (quarter), G4 (quarter), A4 (quarter), B4 (quarter), A4-G4 (beamed eighth notes), F#4 (quarter), E4 (quarter), D4 (quarter), C4 (quarter). The fifth staff continues: D4 (quarter), E4 (quarter), F#4 (quarter), G4 (quarter), A4 (quarter), B4 (quarter), A4-G4 (beamed eighth notes), F#4 (quarter), E4 (quarter), D4 (quarter), C4 (quarter), followed by a double bar line.

13. HEDWIG'S THEME FROM HARRY POTTER

Four staves of musical notation in G major and 3/4 time. The first staff starts with a whole rest followed by a quarter rest, then the melody: G4 (quarter), A4 (quarter), B4 (quarter), A4-G4 (beamed eighth notes), F#4 (quarter), E4 (quarter), D4 (quarter), C4 (quarter). The second staff continues: G4 (quarter), A4 (quarter), B4 (quarter), A4-G4 (beamed eighth notes), F#4 (quarter), E4 (quarter), D4 (quarter), C4 (quarter). The third staff continues: D4 (quarter), E4 (quarter), F#4 (quarter), G4 (quarter), A4 (quarter), B4 (quarter), A4-G4 (beamed eighth notes), F#4 (quarter), E4 (quarter), D4 (quarter), C4 (quarter). The fourth staff continues: D4 (quarter), E4 (quarter), F#4 (quarter), G4 (quarter), A4 (quarter), B4 (quarter), A4-G4 (beamed eighth notes), F#4 (quarter), E4 (quarter), D4 (quarter), C4 (quarter), followed by a double bar line.

## 14. THE MUNSTERS THEME SONG

Musical score for 'The Munsters Theme Song' in 4/4 time, G major. The score consists of three staves of music. The first staff begins with a treble clef and a 4/4 time signature. The melody starts on G4, moving to A4, B4, C5, and then descending to B4, A4, G4. The second staff continues the melody with various rhythmic patterns, including eighth and quarter notes. The third staff concludes the piece with a final G4 note and a double bar line.

## 15. LUIGI'S MANSION 3 MAIN THEME

Musical score for 'Luigi's Mansion 3 Main Theme' in 3/4 time, E-flat major. The score consists of two staves of music. The first staff begins with a treble clef and a 3/4 time signature. The melody starts on E-flat4, moving to F4, G4, and then descending to F4, E-flat4, D4. The second staff continues the melody with various rhythmic patterns, including quarter and eighth notes, and ends with a double bar line.

## 16. SPOOKY SCARY SKELETONS

Musical score for 'Spooky Scary Skeletons' in 6/8 time, G major. The score consists of two staves of music. The first staff begins with a treble clef and a 6/8 time signature. The melody starts on G4, moving to A4, B4, and then descending to A4, G4, F4. The second staff continues the melody with various rhythmic patterns, including quarter and eighth notes, and ends with a double bar line.