

Trumpet

Beginner Band Tunes

Fun Songs for Beginners and Beyond!

1) Shark Attack!

Musical notation for "Shark Attack!" in 4/4 time. The first staff begins with a whole note G4, followed by a quarter rest, then quarter notes A4, B4, and C5. The second staff continues with quarter notes D5, E5, F5, and G5, followed by a quarter rest, then quarter notes G5, F5, E5, and D5, and ends with a whole note C5.

2) Hot Cross Buns

Musical notation for "Hot Cross Buns" in 4/4 time. The first staff begins with a whole note G4, followed by a quarter note A4, a quarter note B4, and a whole note C5. The second staff continues with quarter notes D5, E5, F5, and G5, followed by a quarter note G5, a quarter note F5, a quarter note E5, and a whole note D5.

3) Pierrot (Au Claire De La Lune)

Musical notation for "Pierrot (Au Claire De La Lune)" in 4/4 time. The first staff begins with a quarter note G4, followed by quarter notes A4, B4, and C5. The second staff continues with quarter notes D5, E5, F5, and G5, followed by a quarter note G5, a quarter note F5, a quarter note E5, and a whole note D5.

4) Merrily We Roll Along

Musical notation for "Merrily We Roll Along" in 4/4 time. The first staff begins with a quarter note G4, followed by quarter notes A4, B4, and C5. The second staff continues with quarter notes D5, E5, F5, and G5, followed by a quarter note G5, a quarter note F5, a quarter note E5, and a whole note D5.

Trumpet

2

5) Minor Buns

Musical notation for 'Minor Buns' in 4/4 time. The first staff contains a sequence of notes: G4, A4, B4, C5, B4, A4, G4. The second staff contains a sequence of notes: G4, A4, B4, C5, B4, A4, G4, F4, E4, D4, C4.

6) We Will Rock You

Repeat Sign:
Go back to the beginning and play again.

Musical notation for 'We Will Rock You' in 4/4 time. The melody consists of quarter notes G4, A4, B4, C5, followed by eighth notes G4, A4, B4, C5, and quarter notes G4, A4, B4, C5. The piece ends with a repeat sign.

7) "Let's Go" Cheer #1

Musical notation for 'Let's Go' Cheer #1 in 4/4 time. The melody consists of quarter notes G4, A4, B4, C5, followed by eighth notes G4, A4, B4, C5, and quarter notes G4, A4, B4, C5. There are two instances of '(clap or stomp)' marked with 'x' over eighth notes. The piece ends with a repeat sign.

8) "Let's Go" Cheer #2

Musical notation for 'Let's Go' Cheer #2 in 4/4 time. The melody consists of quarter notes G4, A4, B4, C5, followed by eighth notes G4, A4, B4, C5, and quarter notes G4, A4, B4, C5. There are two instances of '(clap or stomp)' marked with 'x' over eighth notes. The piece ends with a repeat sign.

9) "Here We Go" Cheer

Musical notation for 'Here We Go' Cheer in 4/4 time. The melody consists of quarter notes G4, A4, B4, C5, followed by eighth notes G4, A4, B4, C5, and quarter notes G4, A4, B4, C5. There are two instances of '(stomp)' marked with 'x' over eighth notes. The first measure is marked 'With a Swing'. The piece ends with a repeat sign.

10) Seven Nation Army

Musical notation for 'Seven Nation Army' in 4/4 time. The melody consists of quarter notes G4, A4, B4, C5, followed by eighth notes G4, A4, B4, C5, and quarter notes G4, A4, B4, C5. There are three instances of triplets marked with a '3' over a bracket. The piece ends with a repeat sign.

11) Another One Bites the Dust



12) Hot Cross Buns Harmony

(Play as duet with a friend playing #2 Hot Cross Buns)



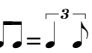
13) Mary Had a Little Lamb



14) Louie Louie



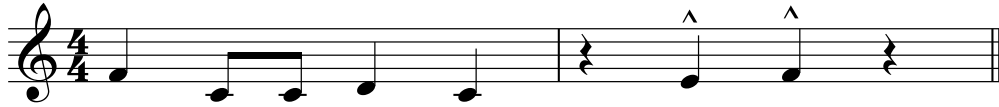
15) Hey!

Swing 



16) Musical "Stingers"

a) Shave and a Haircut



b) Wah-Wah-Wah-Wahhhh



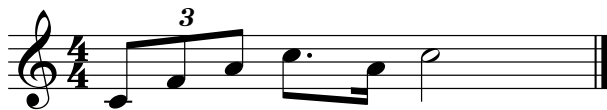
c) Funeral March (Chopin)



d) Ominous Beethoven's 5th Theme



e) Charge!



f) Cartoon Ending



17) Eye of the Tiger

Musical notation for 'Eye of the Tiger' in 4/4 time. The first staff shows the melody with eighth notes and rests. The second staff shows the accompaniment with chords and eighth notes.

18) Go Tell Aunt Rhody

Musical notation for 'Go Tell Aunt Rhody' in 4/4 time. The first staff shows the melody with quarter notes and rests. The second staff shows the accompaniment with chords and quarter notes.

19) Minor Mary

Musical notation for 'Minor Mary' in 4/4 time. The first staff shows the melody with quarter notes. The second staff shows the accompaniment with chords and quarter notes.

Trumpet

6

20) Twinkle Twinkle

Musical notation for 'Twinkle Twinkle' in 4/4 time, consisting of three staves of music. The melody is written in treble clef and consists of a sequence of eighth and quarter notes.

21) Frere Jacques (Brother John)

Musical notation for 'Frere Jacques' in 4/4 time, consisting of two staves of music. The notation includes repeat symbols (double bar lines with dots) indicating one-measure repeats. A legend box is provided below the first staff.

One-Measure Repeat Symbol:
repeat the previous measure.

22) London Bridge

Musical notation for 'London Bridge' in 4/4 time, consisting of two staves of music. The melody is written in treble clef and features a dotted quarter note followed by eighth notes.

23) The Shark Returns

Musical notation for 'The Shark Returns' in 4/4 time, consisting of one staff of music. The notation includes a trill (tr) and a dynamic marking of *tr (b)*.

24) London Bridge Harmony

(Play as duet with a friend playing #22 London Bridge)

Two staves of musical notation in 4/4 time. The first staff begins with a treble clef and a 4/4 time signature. The melody consists of quarter notes: C4, D4, E4, F4, G4, A4, B4, C5, D5, E5, F5, G5, A5, B5, C6, D6, E6, F6, G6, A6, B6, C7, D7, E7, F7, G7, A7, B7, C8. The second staff continues the melody with quarter notes: C8, B7, A7, G7, F7, E7, D7, C7, B6, A6, G6, F6, E6, D6, C6, B5, A5, G5, F5, E5, D5, C5, B4, A4, G4, F4, E4, D4, C4.

25) Let's Go Band

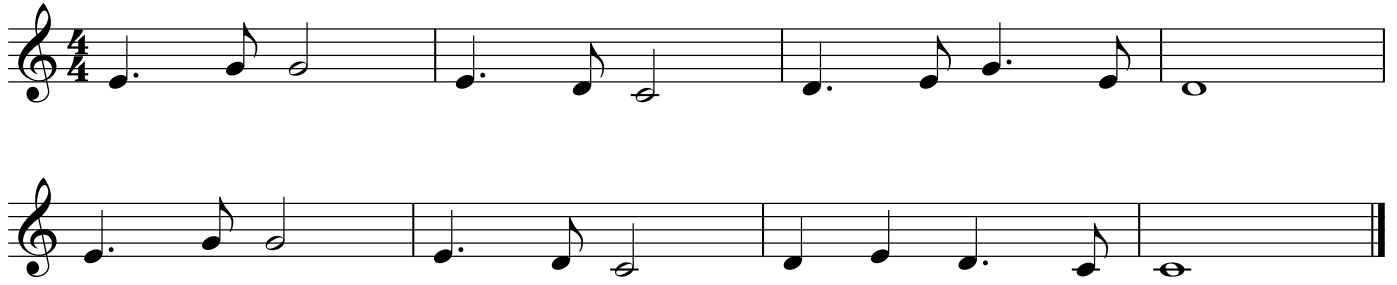
Swing

Two staves of musical notation in 4/4 time with a swing feel. The first staff starts with a treble clef and a 4/4 time signature. The melody features quarter notes with eighth-note triplets. The second staff includes first and second endings. The first ending leads to a double bar line, and the second ending consists of three eighth notes marked with an 'x' followed by a quarter rest. Below the second ending, the text "Let's Go Band!" is written.

26) Ode to Joy (from Beethoven's 9th Symphony)

Four staves of musical notation in 4/4 time. The first staff begins with a treble clef and a 4/4 time signature. The melody is a simple, joyful tune consisting of quarter notes: C4, D4, E4, F4, G4, A4, B4, C5, D5, E5, F5, G5, A5, B5, C6, D6, E6, F6, G6, A6, B6, C7, D7, E7, F7, G7, A7, B7, C8, D8, E8, F8, G8, A8, B8, C9, D9, E9, F9, G9, A9, B9, C10, D10, E10, F10, G10, A10, B10, C11, D11, E11, F11, G11, A11, B11, C12, D12, E12, F12, G12, A12, B12, C13, D13, E13, F13, G13, A13, B13, C14, D14, E14, F14, G14, A14, B14, C15, D15, E15, F15, G15, A15, B15, C16, D16, E16, F16, G16, A16, B16, C17, D17, E17, F17, G17, A17, B17, C18, D18, E18, F18, G18, A18, B18, C19, D19, E19, F19, G19, A19, B19, C20, D20, E20, F20, G20, A20, B20, C21, D21, E21, F21, G21, A21, B21, C22, D22, E22, F22, G22, A22, B22, C23, D23, E23, F23, G23, A23, B23, C24, D24, E24, F24, G24, A24, B24, C25, D25, E25, F25, G25, A25, B25, C26, D26, E26, F26, G26, A26, B26, C27, D27, E27, F27, G27, A27, B27, C28, D28, E28, F28, G28, A28, B28, C29, D29, E29, F29, G29, A29, B29, C30, D30, E30, F30, G30, A30, B30, C31, D31, E31, F31, G31, A31, B31, C32, D32, E32, F32, G32, A32, B32, C33, D33, E33, F33, G33, A33, B33, C34, D34, E34, F34, G34, A34, B34, C35, D35, E35, F35, G35, A35, B35, C36, D36, E36, F36, G36, A36, B36, C37, D37, E37, F37, G37, A37, B37, C38, D38, E38, F38, G38, A38, B38, C39, D39, E39, F39, G39, A39, B39, C40, D40, E40, F40, G40, A40, B40, C41, D41, E41, F41, G41, A41, B41, C42, D42, E42, F42, G42, A42, B42, C43, D43, E43, F43, G43, A43, B43, C44, D44, E44, F44, G44, A44, B44, C45, D45, E45, F45, G45, A45, B45, C46, D46, E46, F46, G46, A46, B46, C47, D47, E47, F47, G47, A47, B47, C48, D48, E48, F48, G48, A48, B48, C49, D49, E49, F49, G49, A49, B49, C50, D50, E50, F50, G50, A50, B50, C51, D51, E51, F51, G51, A51, B51, C52, D52, E52, F52, G52, A52, B52, C53, D53, E53, F53, G53, A53, B53, C54, D54, E54, F54, G54, A54, B54, C55, D55, E55, F55, G55, A55, B55, C56, D56, E56, F56, G56, A56, B56, C57, D57, E57, F57, G57, A57, B57, C58, D58, E58, F58, G58, A58, B58, C59, D59, E59, F59, G59, A59, B59, C60, D60, E60, F60, G60, A60, B60, C61, D61, E61, F61, G61, A61, B61, C62, D62, E62, F62, G62, A62, B62, C63, D63, E63, F63, G63, A63, B63, C64, D64, E64, F64, G64, A64, B64, C65, D65, E65, F65, G65, A65, B65, C66, D66, E66, F66, G66, A66, B66, C67, D67, E67, F67, G67, A67, B67, C68, D68, E68, F68, G68, A68, B68, C69, D69, E69, F69, G69, A69, B69, C70, D70, E70, F70, G70, A70, B70, C71, D71, E71, F71, G71, A71, B71, C72, D72, E72, F72, G72, A72, B72, C73, D73, E73, F73, G73, A73, B73, C74, D74, E74, F74, G74, A74, B74, C75, D75, E75, F75, G75, A75, B75, C76, D76, E76, F76, G76, A76, B76, C77, D77, E77, F77, G77, A77, B77, C78, D78, E78, F78, G78, A78, B78, C79, D79, E79, F79, G79, A79, B79, C80, D80, E80, F80, G80, A80, B80, C81, D81, E81, F81, G81, A81, B81, C82, D82, E82, F82, G82, A82, B82, C83, D83, E83, F83, G83, A83, B83, C84, D84, E84, F84, G84, A84, B84, C85, D85, E85, F85, G85, A85, B85, C86, D86, E86, F86, G86, A86, B86, C87, D87, E87, F87, G87, A87, B87, C88, D88, E88, F88, G88, A88, B88, C89, D89, E89, F89, G89, A89, B89, C90, D90, E90, F90, G90, A90, B90, C91, D91, E91, F91, G91, A91, B91, C92, D92, E92, F92, G92, A92, B92, C93, D93, E93, F93, G93, A93, B93, C94, D94, E94, F94, G94, A94, B94, C95, D95, E95, F95, G95, A95, B95, C96, D96, E96, F96, G96, A96, B96, C97, D97, E97, F97, G97, A97, B97, C98, D98, E98, F98, G98, A98, B98, C99, D99, E99, F99, G99, A99, B99, C100, D100, E100, F100, G100, A100, B100, C101, D101, E101, F101, G101, A101, B101, C102, D102, E102, F102, G102, A102, B102, C103, D103, E103, F103, G103, A103, B103, C104, D104, E104, F104, G104, A104, B104, C105, D105, E105, F105, G105, A105, B105, C106, D106, E106, F106, G106, A106, B106, C107, D107, E107, F107, G107, A107, B107, C108, D108, E108, F108, G108, A108, B108, C109, D109, E109, F109, G109, A109, B109, C110, D110, E110, F110, G110, A110, B110, C111, D111, E111, F111, G111, A111, B111, C112, D112, E112, F112, G112, A112, B112, C113, D113, E113, F113, G113, A113, B113, C114, D114, E114, F114, G114, A114, B114, C115, D115, E115, F115, G115, A115, B115, C116, D116, E116, F116, G116, A116, B116, C117, D117, E117, F117, G117, A117, B117, C118, D118, E118, F118, G118, A118, B118, C119, D119, E119, F119, G119, A119, B119, C120, D120, E120, F120, G120, A120, B120, C121, D121, E121, F121, G121, A121, B121, C122, D122, E122, F122, G122, A122, B122, C123, D123, E123, F123, G123, A123, B123, C124, D124, E124, F124, G124, A124, B124, C125, D125, E125, F125, G125, A125, B125, C126, D126, E126, F126, G126, A126, B126, C127, D127, E127, F127, G127, A127, B127, C128, D128, E128, F128, G128, A128, B128, C129, D129, E129, F129, G129, A129, B129, C130, D130, E130, F130, G130, A130, B130, C131, D131, E131, F131, G131, A131, B131, C132, D132, E132, F132, G132, A132, B132, C133, D133, E133, F133, G133, A133, B133, C134, D134, E134, F134, G134, A134, B134, C135, D135, E135, F135, G135, A135, B135, C136, D136, E136, F136, G136, A136, B136, C137, D137, E137, F137, G137, A137, B137, C138, D138, E138, F138, G138, A138, B138, C139, D139, E139, F139, G139, A139, B139, C140, D140, E140, F140, G140, A140, B140, C141, D141, E141, F141, G141, A141, B141, C142, D142, E142, F142, G142, A142, B142, C143, D143, E143, F143, G143, A143, B143, C144, D144, E144, F144, G144, A144, B144, C145, D145, E145, F145, G145, A145, B145, C146, D146, E146, F146, G146, A146, B146, C147, D147, E147, F147, G147, A147, B147, C148, D148, E148, F148, G148, A148, B148, C149, D149, E149, F149, G149, A149, B149, C150, D150, E150, F150, G150, A150, B150, C151, D151, E151, F151, G151, A151, B151, C152, D152, E152, F152, G152, A152, B152, C153, D153, E153, F153, G153, A153, B153, C154, D154, E154, F154, G154, A154, B154, C155, D155, E155, F155, G155, A155, B155, C156, D156, E156, F156, G156, A156, B156, C157, D157, E157, F157, G157, A157, B157, C158, D158, E158, F158, G158, A158, B158, C159, D159, E159, F159, G159, A159, B159, C160, D160, E160, F160, G160, A160, B160, C161, D161, E161, F161, G161, A161, B161, C162, D162, E162, F162, G162, A162, B162, C163, D163, E163, F163, G163, A163, B163, C164, D164, E164, F164, G164, A164, B164, C165, D165, E165, F165, G165, A165, B165, C166, D166, E166, F166, G166, A166, B166, C167, D167, E167, F167, G167, A167, B167, C168, D168, E168, F168, G168, A168, B168, C169, D169, E169, F169, G169, A169, B169, C170, D170, E170, F170, G170, A170, B170, C171, D171, E171, F171, G171, A171, B171, C172, D172, E172, F172, G172, A172, B172, C173, D173, E173, F173, G173, A173, B173, C174, D174, E174, F174, G174, A174, B174, C175, D175, E175, F175, G175, A175, B175, C176, D176, E176, F176, G176, A176, B176, C177, D177, E177, F177, G177, A177, B177, C178, D178, E178, F178, G178, A178, B178, C179, D179, E179, F179, G179, A179, B179, C180, D180, E180, F180, G180, A180, B180, C181, D181, E181, F181, G181, A181, B181, C182, D182, E182, F182, G182, A182, B182, C183, D183, E183, F183, G183, A183, B183, C184, D184, E184, F184, G184, A184, B184, C185, D185, E185, F185, G185, A185, B185, C186, D186, E186, F186, G186, A186, B186, C187, D187, E187, F187, G187, A187, B187, C188, D188, E188, F188, G188, A188, B188, C189, D189, E189, F189, G189, A189, B189, C190, D190, E190, F190, G190, A190, B190, C191, D191, E191, F191, G191, A191, B191, C192, D192, E192, F192, G192, A192, B192, C193, D193, E193, F193, G193, A193, B193, C194, D194, E194, F194, G194, A194, B194, C195, D195, E195, F195, G195, A195, B195, C196, D196, E196, F196, G196, A196, B196, C197, D197, E197, F197, G197, A197, B197, C198, D198, E198, F198, G198, A198, B198, C199, D199, E199, F199, G199, A199, B199, C200, D200, E200, F200, G200, A200, B200, C201, D201, E201, F201, G201, A201, B201, C202, D202, E202, F202, G202, A202, B202, C203, D203, E203, F203, G203, A203, B203, C204, D204, E204, F204, G204, A204, B204, C205, D205, E205, F205, G205, A205, B205, C206, D206, E206, F206, G206, A206, B206, C207, D207, E207, F207, G207, A207, B207, C208, D208, E208, F208, G208, A208, B208, C209, D209, E209, F209, G209, A209, B209, C210, D210, E210, F210, G210, A210, B210, C211, D211, E211, F211, G211, A211, B211, C212, D212, E212, F212, G212, A212, B212, C213, D213, E213, F213, G213, A213, B213, C214, D214, E214, F214, G214, A214, B214, C215, D215, E215, F215, G215, A215, B215, C216, D216, E216, F216, G216, A216, B216, C217, D217, E217, F217, G217, A217, B217, C218, D218, E218, F218, G218, A218, B218, C219, D219, E219, F219, G219, A219, B219, C220, D220, E220, F220, G220, A220, B220, C221, D221, E221, F221, G221, A221, B221, C222, D222, E222, F222, G222, A222, B222, C223, D223, E223, F223, G223, A223, B223, C224, D224, E224, F224, G224, A224, B224, C225, D225, E225, F225, G225, A225, B225, C226, D226, E226, F226, G226, A226, B226, C227, D227, E227, F227, G227, A227, B227, C228, D228, E228, F228, G228, A228, B228, C229, D229, E229, F229, G229, A229, B229, C230, D230, E230, F230, G230, A230, B230, C231, D231, E231, F231, G231, A231, B231, C232, D232, E232, F232, G232, A232, B232, C233, D233, E233, F233, G233, A233, B233, C234, D234, E234, F234, G234, A234, B234, C235, D235, E235, F235, G235, A235, B235, C236, D236, E236, F236, G236, A236, B236, C237, D237, E237, F237, G237, A237, B237, C238, D238, E238, F238, G238, A238, B238, C239, D239, E239, F239, G239, A239, B239, C240, D240, E240, F240, G240, A240, B240, C241, D241, E241, F241, G241, A241, B241, C242, D242, E242, F242, G242, A242, B242, C243, D243, E243, F243, G243, A243, B243, C244, D244, E244, F244, G244, A244, B244, C245, D245, E245, F245, G245, A245, B245, C246, D246, E246, F246, G246, A246, B246, C247, D247, E247, F247, G247, A247, B247, C248, D248, E248, F248, G248, A248, B248, C249, D249, E249, F249, G249, A249, B249, C250, D250, E250, F250, G250, A250, B250, C251, D251, E251, F251, G251, A251, B251, C252, D252, E252, F252, G252, A252, B252, C253, D253, E253, F253, G253, A253, B253, C254, D254, E254, F254, G254, A254, B254, C255, D255, E255, F255, G255, A255, B255, C256, D256, E256, F256, G256, A256, B256, C257, D257, E257, F257, G257, A257, B257, C258, D258, E258, F258, G258, A258, B258, C259, D259, E259, F259, G259, A259, B259, C260, D260, E260, F260, G260, A260, B260, C261, D261, E261, F261, G261, A261, B261, C262, D262, E262, F262, G262, A262, B262, C263, D263, E263, F263, G263, A263, B263, C264, D264, E264, F264, G264, A264, B264, C265, D265, E265, F265, G265, A265, B265, C266, D266, E266, F266, G266, A266, B266, C267, D267, E267, F267, G267, A267, B267, C268, D268, E268, F268, G268, A268, B268, C269, D269, E269, F269, G269, A269, B269, C270, D270, E270, F270, G270, A270, B270, C271, D271, E271, F271, G271, A271, B271, C272, D272, E272, F272, G272, A272, B272, C273, D273, E273, F273, G273, A273, B273, C274, D274, E274, F274, G274, A274, B274, C275, D275, E275, F275, G275, A275, B275, C276, D276, E276, F276, G276, A276, B276, C277, D277, E277, F277, G277, A277, B277, C278, D278, E278, F278, G278, A278, B278, C279, D279, E279, F279, G279, A279, B279, C280, D280, E280, F280, G280, A280, B280, C281, D281, E281, F281, G281, A281, B281, C282, D282, E282, F282, G282, A282, B282, C283, D283, E283, F283, G283, A283, B283, C284, D284, E284, F284, G284, A284, B284, C285, D285, E285, F285, G285, A285, B285, C286, D286, E286, F286, G286, A286, B286, C287, D287, E287, F287, G287, A287, B287, C288, D288, E288, F288, G288, A288, B288, C289, D289, E289, F289, G289, A289, B289, C290, D290, E290, F290, G290, A290, B290, C291, D291, E291, F291, G291, A291, B291, C292, D292, E292, F292, G292, A292, B292, C293, D293, E293, F293, G293, A293, B293, C294, D294, E294, F294, G294, A294, B294, C295, D295, E295, F295, G295, A295, B295, C296, D296, E296, F296, G296, A296, B296, C297, D297, E297, F297, G297, A297, B297, C298, D298, E298, F298, G298, A298, B298, C299, D299, E299, F299, G299, A299, B299, C300, D300, E300, F300, G300, A300, B300, C301, D301, E301, F301, G301, A301, B301, C302, D302, E302, F302, G302, A302, B302, C303, D303, E303, F303, G303, A303, B303, C304, D304, E304, F304, G304, A304, B304, C305, D305, E305, F305, G305, A305, B305, C306, D306, E306, F306, G306, A306, B306, C307, D307, E307, F307, G307, A307, B307, C308, D308, E308, F308, G308, A308, B308, C309, D309, E309, F309, G309, A309, B309, C310, D310, E310, F310, G310, A310, B310, C311, D311, E311, F311, G311, A311, B311, C312, D312, E312, F312, G312, A312, B312, C313, D313, E313, F313, G313, A313, B313, C314, D314, E314, F314, G314, A314, B314, C315, D315, E315, F315, G315, A315, B315, C316, D316, E316, F316, G316, A316, B316, C317, D317, E317, F317, G317, A317, B317, C318, D318, E318, F318, G318, A318, B318, C319, D319, E319, F319, G319, A319, B319, C320, D320, E320, F320, G320, A320, B320, C321, D321, E321, F321, G321, A321, B321, C322, D322, E322, F322, G322, A322, B322, C323, D323, E323, F323, G323, A323, B323, C324, D324, E324, F324, G324, A324, B324, C325, D325, E325, F325, G325, A325, B325, C326, D326, E326, F326, G326, A326, B326, C327, D327, E327, F327, G327, A327, B327, C328, D328, E328, F328, G328, A328, B328, C329, D329, E329, F329, G329, A329, B329, C330, D330, E330, F330, G330, A330, B330, C331, D331, E331, F331, G331, A331, B331, C332, D332, E332, F332, G332, A332, B332, C333, D333, E333, F333, G333, A333, B333, C334, D334, E334, F334, G334, A334, B334, C335, D335, E335, F335, G335, A335, B335, C336, D336, E336, F336, G336, A336, B336, C337, D337, E337, F337, G337, A337, B337, C338, D338, E338, F338, G338, A338, B338, C339, D339, E339, F339, G339, A339, B339, C340, D340, E340, F340, G340, A340, B340, C341, D341, E341, F341, G341, A341, B341, C342, D342, E342, F342, G342, A342, B342, C343, D343, E343, F343, G343, A343, B343, C344, D344, E344, F344, G344, A344, B344, C345, D345, E345, F345, G345, A345, B345, C346, D346, E346, F346, G346, A346, B346, C347, D347, E347, F347, G347, A347, B347, C348, D348, E348, F348, G348, A348, B348, C349, D349, E349, F349, G349, A349, B349, C350, D350, E350, F350, G350, A350, B350, C351, D351, E351, F351, G351, A351, B351, C352, D352, E352, F352, G352, A352, B352, C353, D353, E353, F353, G353, A353, B353, C354, D354, E354, F354, G354, A354, B354, C355, D

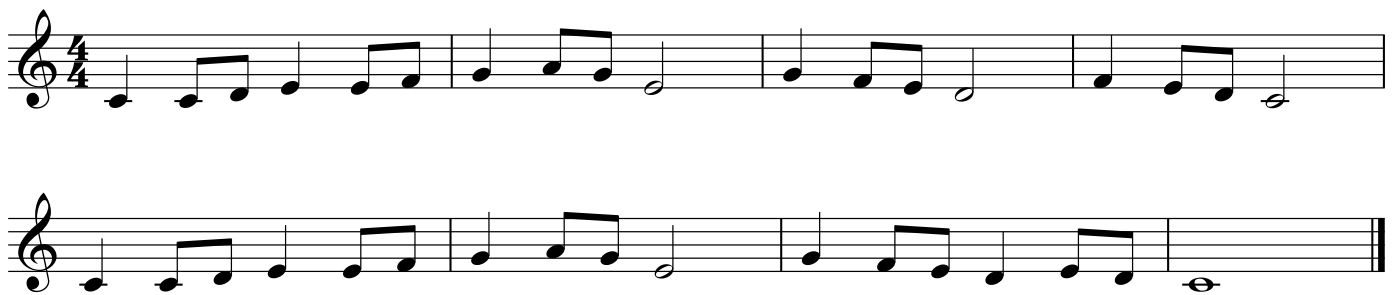
27) Largo Theme from New World Symphony (Dvorak)



28) Baa Baa Black Sheep



29) Long Long Ago



30) Old MacDonald

Musical notation for 'Old MacDonald' in 4/4 time, consisting of three staves of music. The first staff contains the main melody. The second staff includes a repeat sign and a key signature change to one flat. The third staff concludes the piece with a double bar line.

31) When the Saints Go Marching In

Musical notation for 'When the Saints Go Marching In' in 4/4 time, consisting of three staves of music. The first staff begins with a key signature change to one flat. The second staff continues the melody. The third staff concludes the piece with a double bar line.

32) America (My Country 'Tis of Thee)

Musical notation for 'America (My Country 'Tis of Thee)' in 3/4 time, consisting of three staves of music. The first staff contains the main melody. The second staff continues the melody. The third staff concludes the piece with a double bar line.

33) Jingle Bells

Musical notation for the trumpet part of "Jingle Bells". It consists of two staves. The first staff begins with a treble clef, a 4/4 time signature, and a key signature of one sharp (F#). The melody starts with a repeat sign. A first ending bracket labeled "1." spans the final two measures of the first staff. The second staff begins with a second ending bracket labeled "2." that includes a repeat sign and ends with a double bar line.

34) Good King Wenceslas

Key Signature:
Instead of placing flats and sharps on individual notes, they are placed at the beginning of the music, and apply to the entire song. This is called the "key signature". Circle all the notes that are changed by the key signature in this song.

Musical notation for the trumpet part of "Good King Wenceslas". It consists of three staves. The first staff begins with a treble clef, a 4/4 time signature, and a key signature of two flats (Bb and Eb). The melody is written across three staves, ending with a double bar line.

35) Dreidel Song

Musical notation for the trumpet part of "Dreidel Song". It consists of three staves. The first staff begins with a treble clef, a 4/4 time signature, and a key signature of one sharp (F#). The melody is written across three staves, ending with a double bar line.

36) Jolly Old St. Nicholas

Musical notation for 'Jolly Old St. Nicholas' in G major, 4/4 time. The piece consists of two staves. The first staff contains the first 12 measures of the melody. The second staff contains two first endings: the first ending covers measures 13-16, and the second ending covers measures 17-20. The key signature has one flat (F major), and the time signature is 4/4.

37) Up on the Housetop

Musical notation for 'Up on the Housetop' in G major, 2/4 time. The piece consists of four staves of music. The melody is characterized by eighth and sixteenth notes, with many notes marked with an accent (´). The key signature has one flat (F major), and the time signature is 2/4.

38) Sevivon (Spin, My Top)

Accidental:
 An 'accidental' is when a sharp, flat, or natural is placed in a song to temporarily change the note from the given key signature. The accidental stays in effect for the full measure. Circle all of the notes in this song that are changed by the accidentals.

Musical notation for 'Sevivon (Spin, My Top)' in G major, 4/4 time. The piece consists of three staves of music. The melody features several accidentals: a sharp sign (#) above the note G in the second measure of the second staff, and a flat sign (b) below the note F in the second measure of the third staff. The key signature has one flat (F major), and the time signature is 4/4.

Trumpet

12 39) This Old Man

Two staves of musical notation for the song 'This Old Man'. The first staff is in 4/4 time and contains the first four measures. The second staff continues the melody for the next four measures, ending with a double bar line.

40) Mexican Hat Dance

Two staves of musical notation for the song 'Mexican Hat Dance'. The first staff is in 3/4 time and contains the first four measures. The second staff continues the melody for the next four measures, ending with a double bar line.

41) Algerian Dance (Snake Charmer Song)

Three staves of musical notation for the song 'Algerian Dance (Snake Charmer Song)'. The first staff is in 2/4 time and contains the first four measures. The second and third staves continue the melody for the next four measures, ending with a double bar line.

42) Arirang (Korean Folk Song)

Two staves of musical notation for the song 'Arirang (Korean Folk Song)'. The first staff is in 3/4 time and contains the first four measures. The second staff continues the melody for the next four measures, ending with a double bar line.