

SPOOKY TUNES

1. SHARK ATTACK!

Musical notation for 'SHARK ATTACK!' in 4/4 time, key of B-flat major. The piece consists of two staves. The first staff begins with a repeat sign and contains four measures: a whole note B-flat, a quarter note G-flat with a fermata, a whole note B-flat, and a quarter note G-flat with a fermata. The second staff contains four measures: a quarter note B-flat, a quarter note G-flat, a quarter note F, a quarter note E-flat, a quarter note D, a quarter note C, a quarter note B-flat, and a whole note B-flat.

2. ADDAMS FAMILY THEME SONG

Musical notation for 'ADDAMS FAMILY THEME SONG' in 4/4 time, key of B-flat major. The piece consists of two staves. The first staff is labeled 'FINGER SNAPS' and contains five measures of eighth-note triplets. The second staff contains five measures, including eighth-note triplets and quarter notes with 'x' marks indicating finger snaps.

3. SKIN AND BONES

Musical notation for 'SKIN AND BONES' in 6/8 time, key of B-flat major. The piece consists of two staves. The first staff contains five measures of eighth notes and dotted quarter notes. The second staff contains five measures, including eighth notes, dotted quarter notes, and a quarter note with a fermata.

4. FUNERAL MARCH

Musical notation for 'FUNERAL MARCH' in 4/4 time, key of B-flat major. The piece consists of three staves. The first staff contains five measures of eighth notes and dotted quarter notes. The second staff contains five measures of eighth notes and dotted quarter notes. The third staff contains five measures of eighth notes and dotted quarter notes.

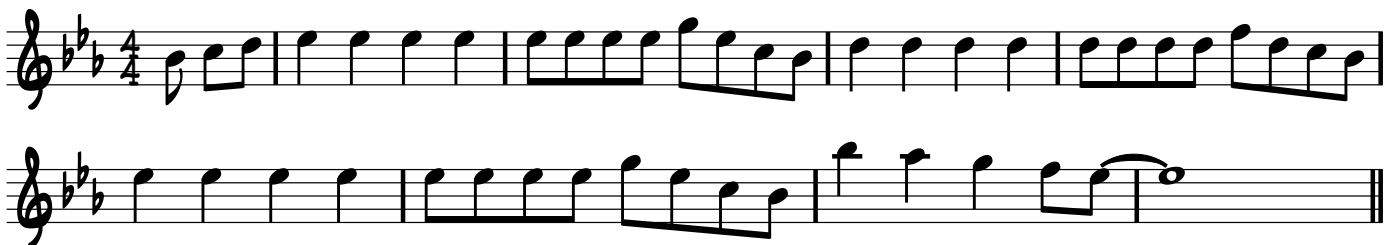
5. IN THE HALL OF THE MOUNTAIN KING



6. WITCH DOCTOR



7. PURPLE PEOPLE EATER



8. THIS IS HALLOWEEN FROM "THE NIGHTMARE BEFORE CHRISTMAS"



9. DANSE MACABRE

THEME 1



THEME 2



THEME 3



THEME 4



10. GHOSTBUSTERS THEME SONG



11. DING DONG THE WITCH IS DEAD (WIZARD OF OZ)

Musical notation for 'Ding Dong the Witch is Dead' (Wizard of Oz). The piece is in 4/4 time, key of B-flat major (two flats), and begins with a repeat sign. The melody is written on two staves. The first staff contains the first eight measures, and the second staff contains the remaining four measures, ending with a repeat sign.

12. THRILLER

Musical notation for 'Thriller'. The piece is in 4/4 time, key of B-flat major (two flats). It consists of five staves of music. The first four staves feature a melodic line with various rhythmic patterns, including eighth and sixteenth notes, and rests. The fifth staff contains a complex accompaniment with many beamed eighth notes and rests, characteristic of the 'Thriller' piano accompaniment.

13. HEDWIG'S THEME FROM HARRY POTTER

Musical notation for Hedwig's Theme from Harry Potter. The piece is in 3/4 time, key of B-flat major (two flats). It consists of four staves of music. The melody is written on the first three staves, and the fourth staff contains a complex accompaniment with many beamed eighth notes and rests, characteristic of the 'Hedwig's Theme' piano accompaniment.

14. THE MUNSTERS THEME SONG

Musical notation for 'The Munsters Theme Song'. The piece is in G minor (three flats) and 4/4 time. It consists of three staves of music. The first staff begins with a treble clef and a key signature of three flats (B-flat, E-flat, A-flat). The melody starts with a quarter note G4, followed by quarter notes A4, B-flat4, C5, and D5. The second staff continues the melody with quarter notes E5, F5, G5, and A5, followed by quarter notes B-flat5, C6, and D6. The third staff concludes the melody with quarter notes E6, F6, G6, and A6, followed by quarter notes B-flat6, C7, and D7. The piece ends with a double bar line.

15. LUIGI'S MANSION 3 MAIN THEME

Musical notation for 'Luigi's Mansion 3 Main Theme'. The piece is in G minor (three flats) and 3/4 time. It consists of two staves of music. The first staff begins with a treble clef and a key signature of three flats (B-flat, E-flat, A-flat). The melody starts with a quarter note G4, followed by quarter notes A4, B-flat4, and C5. The second staff continues the melody with quarter notes D5, E5, F5, and G5, followed by quarter notes A5, B-flat5, and C6. The piece ends with a double bar line.

16. SPOOKY SCARY SKELETONS

Musical notation for 'Spooky Scary Skeletons'. The piece is in G minor (three flats) and 6/8 time. It consists of two staves of music. The first staff begins with a treble clef and a key signature of three flats (B-flat, E-flat, A-flat). The melody starts with a quarter note G4, followed by quarter notes A4, B-flat4, and C5. The second staff continues the melody with quarter notes D5, E5, F5, and G5, followed by quarter notes A5, B-flat5, and C6. The piece ends with a double bar line.