

Tuba

# Beginner Band Tunes

Fun Songs for Beginners and Beyond!

## 1) Shark Attack!

Two staves of musical notation for the song 'Shark Attack!'. The first staff is in bass clef with a 4/4 time signature. It begins with a whole note G2, followed by a half note Bb2, and then three measures of quarter rests. The second staff continues with a half note G2, a half note Bb2, and then a sequence of eighth notes: G2, Bb2, G2, A2, Bb2, A2, G2, F2, E2, D2, C2.

## 2) Hot Cross Buns

Two staves of musical notation for the song 'Hot Cross Buns'. The first staff is in bass clef with a 4/4 time signature. It contains four measures of music: a whole note G2, a half note E2, a half note Bb2, a whole note G2, a half note E2, and a half note Bb2. The second staff continues with a sequence of eighth notes: Bb2, G2, F2, E2, D2, C2, Bb2, A2, G2, E2, Bb2.

## 3) Pierrot (Au Claire De La Lune)

Two staves of musical notation for the song 'Pierrot (Au Claire De La Lune)'. The first staff is in bass clef with a 4/4 time signature. It contains four measures of music: a half note Bb2, a quarter note G2, a quarter note F2, a quarter note E2, a whole note D2, a half note Bb2, a quarter note G2, a quarter note F2, a quarter note E2, and a half note Bb2. The second staff continues with a sequence of eighth notes: Bb2, G2, F2, E2, D2, Bb2, G2, F2, E2, D2, Bb2.

## 4) Merrily We Roll Along

Two staves of musical notation for the song 'Merrily We Roll Along'. The first staff is in bass clef with a 4/4 time signature. It contains four measures of music: a quarter note G2, a quarter note F2, a quarter note E2, a quarter note D2, a quarter note C2, a quarter note Bb2, a quarter note A2, a quarter note G2, a quarter note F2, a quarter note E2, a quarter note D2, and a quarter note C2. The second staff continues with a sequence of eighth notes: G2, F2, E2, D2, C2, Bb2, A2, G2, F2, E2, D2, C2.

# Tuba

2

## 5) Minor Buns

Two staves of music in 4/4 time. The first staff contains a bass line with notes: B2, G2, F2, B2, G2, F2. The second staff contains a rhythmic accompaniment of eighth notes: B2, G2, F2, G2, A2, B2, A2, G2, F2, E2, D2, C2.

## 6) We Will Rock You

**Repeat Sign:**  
Go back to the beginning and play again.

One staff of music in 4/4 time. The bass line consists of quarter notes: B2, G2, F2, G2, A2, B2, A2, G2, F2, E2, D2, C2. There are rests in the second and fourth measures. The piece ends with a repeat sign.

## 7) "Let's Go" Cheer #1

One staff of music in 4/4 time. The bass line consists of quarter notes: B2, G2, F2, G2, A2, B2, A2, G2, F2, E2, D2, C2. There are rests in the second and fourth measures. Above the rests are 'x' marks indicating claps or stomps. The piece ends with a repeat sign.

## 8) "Let's Go" Cheer #2

One staff of music in 4/4 time. The bass line consists of quarter notes: B2, G2, F2, G2, A2, B2, A2, G2, F2, E2, D2, C2. There are rests in the second and fourth measures. Above the rests are 'x' marks indicating claps or stomps. The piece ends with a repeat sign.

## 9) "Here We Go" Cheer

With a Swing

One staff of music in 4/4 time. The bass line consists of quarter notes: B2, G2, F2, G2, A2, B2, A2, G2, F2, E2, D2, C2. There are rests in the second and fourth measures. Above the rests are 'x' marks indicating stomps. The piece ends with a repeat sign.

## 10) Seven Nation Army

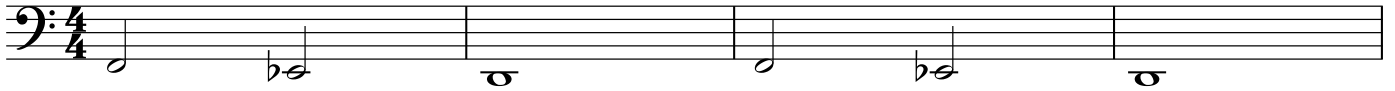
Two staves of music in 4/4 time. The first staff contains a bass line with notes: B2, G2, F2, G2, A2, B2, A2, G2, F2, E2, D2, C2. The second staff contains a rhythmic accompaniment of eighth notes: B2, G2, F2, G2, A2, B2, A2, G2, F2, E2, D2, C2. There are rests in the second and fourth measures. Above the rests are 'x' marks indicating claps or stomps. The piece ends with a repeat sign.

## 11) Another One Bites the Dust

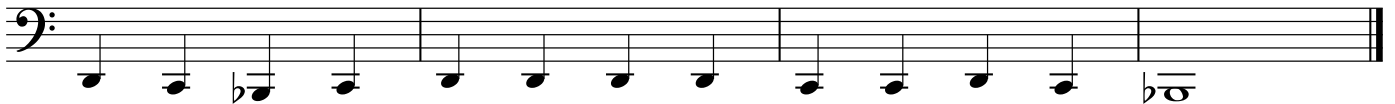


## 12) Hot Cross Buns Harmony

(Play as duet with a friend playing #2 Hot Cross Buns)



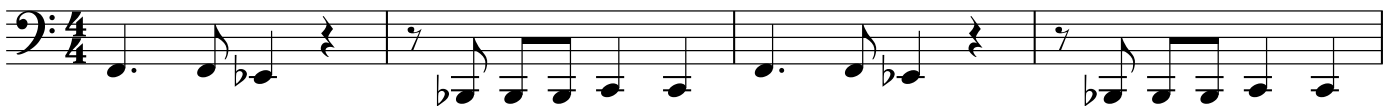
## 13) Mary Had a Little Lamb



## 14) Louie Louie



## 15) Hey!

Swing  $\text{♪} = \overset{3}{\text{♪}} \text{♪}$ 



17) Eye of the Tiger

Two staves of musical notation in bass clef, 4/4 time. The first staff contains a melody with quarter and eighth notes, including rests and accents. The second staff contains a bass line with chords and single notes, ending with a double bar line.

18) Go Tell Aunt Rhody

Two staves of musical notation in bass clef, 4/4 time. The first staff contains a melody with quarter notes and rests. The second staff contains a bass line with chords and single notes, ending with a double bar line.

19) Minor Mary

Two staves of musical notation in bass clef, 4/4 time. The first staff contains a melody with quarter notes. The second staff contains a bass line with chords and single notes, ending with a double bar line.

# Tuba

6

## 20) Twinkle Twinkle

Three staves of musical notation for the piece 'Twinkle Twinkle' in bass clef, 4/4 time. The first staff begins with a key signature of one flat (B-flat). The music consists of a simple melody of eighth and quarter notes.

## 21) Frere Jacques (Brother John)

Two staves of musical notation for 'Frere Jacques' in bass clef, 4/4 time. The first staff includes a key signature of one flat and a 'One-Measure Repeat Symbol' (a double bar line with a diagonal slash) indicating a repeat of the previous measure. A text box below the first staff reads: "One-Measure Repeat Symbol: repeat the previous measure."

## 22) London Bridge

Two staves of musical notation for 'London Bridge' in bass clef, 4/4 time. The first staff begins with a key signature of one flat. The melody is simple, using quarter and eighth notes.

## 23) The Shark Returns

One staff of musical notation for 'The Shark Returns' in bass clef, 4/4 time. The piece starts with a key signature of one flat and features a melody with eighth notes and rests. A trill symbol, 'tr (b)', is placed above the final note of the piece.

### 24) London Bridge Harmony

(Play as duet with a friend playing #22 London Bridge)

Two staves of music in bass clef, 4/4 time signature. The first staff contains four measures of music, and the second staff contains four measures. The melody consists of quarter and eighth notes, with some chords indicated by stems with multiple flags.

### 25) Let's Go Band

Swing

Two staves of music in bass clef, 4/4 time signature. The first staff contains four measures of music, and the second staff contains four measures. The melody features a triplet and a first/second ending structure. The first ending leads to a double bar line, and the second ending consists of three eighth notes followed by a quarter rest. Below the second ending, the text "Let's Go Band!" is written.

### 26) Ode to Joy (from Beethoven's 9th Symphony)

Four staves of music in bass clef, 4/4 time signature. Each staff contains four measures of music. The melody is a simple, rhythmic sequence of eighth and quarter notes.

Tuba

8

27) Largo Theme from New World Symphony (Dvorak)

Musical notation for Tuba part of Largo Theme from New World Symphony (Dvorak). The notation is in 4/4 time and features a slow, melodic line with a key signature of one flat (B-flat major). The first staff shows the beginning of the piece, and the second staff shows the end.

28) Baa Baa Black Sheep

Musical notation for Tuba part of Baa Baa Black Sheep. The notation is in 4/4 time and features a simple, rhythmic melody with a key signature of one flat (B-flat major). The first staff shows the beginning of the piece, and the second and third staves show the end.

29) Long Long Ago

Musical notation for Tuba part of Long Long Ago. The notation is in 4/4 time and features a simple, rhythmic melody with a key signature of one flat (B-flat major). The first staff shows the beginning of the piece, and the second staff shows the end.



30) Old MacDonald

Three staves of musical notation for 'Old MacDonald' in bass clef, 4/4 time. The first staff contains the main melody. The second staff includes rests and a double bar line. The third staff concludes the piece with a double bar line.

31) When the Saints Go Marching In

Three staves of musical notation for 'When the Saints Go Marching In' in bass clef, 4/4 time. The first staff begins with a 4-measure rest. The second and third staves continue the melody.

32) America (My Country 'Tis of Thee)

Three staves of musical notation for 'America (My Country 'Tis of Thee)' in bass clef, 3/4 time. The first staff contains the main melody. The second and third staves continue the piece.

### 33) Jingle Bells

Musical notation for the Tuba part of "Jingle Bells". It consists of two staves. The first staff begins with a treble clef, a key signature of one flat (B-flat), and a 4/4 time signature. The melody is written in eighth and sixteenth notes. A first ending bracket labeled "1." spans the final two measures of the first staff. The second staff begins with a second ending bracket labeled "2." and concludes with a double bar line.

### 34) Good King Wenceslas

**Key Signature:**  
Instead of placing flats and sharps on individual notes, they are placed at the beginning of the music, and apply to the entire song. This is called the "key signature". Circle all the notes that are changed by the key signature in this song.

Musical notation for the Tuba part of "Good King Wenceslas". It consists of three staves. The first staff begins with a treble clef, a key signature of two flats (B-flat and E-flat), and a 4/4 time signature. The melody is written in eighth and sixteenth notes. The second and third staves continue the melody across two measures each, ending with a double bar line.

### 35) Dreidel Song

Musical notation for the Tuba part of "Dreidel Song". It consists of three staves. The first staff begins with a treble clef, a key signature of two flats (B-flat and E-flat), and a 4/4 time signature. The melody is written in eighth and sixteenth notes, starting with a rest. The second and third staves continue the melody across two measures each, ending with a double bar line.

### 36) Jolly Old St. Nicholas

Musical notation for 'Jolly Old St. Nicholas' in bass clef, 4/4 time, key of B-flat major. The piece consists of two staves. The first staff contains the main melody. The second staff contains two first endings, labeled '1.' and '2.', which lead to a double bar line at the end of the piece.

### 37) Up on the Housetop

Musical notation for 'Up on the Housetop' in bass clef, 2/4 time, key of B-flat major. The piece consists of four staves of music, each containing a line of the melody with various rhythmic patterns and rests.

### 38) Sevivon (Spin, My Top)

**Accidental:**  
An "accidental" is when a sharp, flat, or natural is placed in a song to temporarily change the note from the given key signature. The accidental stays in effect for the full measure. Circle all of the notes in this song that are changed by the accidentals.

Musical notation for 'Sevivon (Spin, My Top)' in bass clef, 4/4 time, key of B-flat major. The piece consists of three staves of music. The notation includes various rhythmic patterns and accidentals (sharps and flats) that change the notes from the key signature.

Tuba

12 39) This Old Man

Two staves of musical notation for 'This Old Man'. The first staff is in bass clef, 4/4 time, with a key signature of two flats (B-flat and E-flat). The melody consists of quarter and eighth notes. The second staff continues the melody with similar rhythmic patterns.

40) Mexican Hat Dance

Two staves of musical notation for 'Mexican Hat Dance'. The first staff is in bass clef, 3/4 time, with a key signature of two flats. The melody features a mix of quarter and eighth notes with some rests. The second staff continues the piece with similar rhythmic patterns.

41) Algerian Dance (Snake Charmer Song)

Three staves of musical notation for 'Algerian Dance (Snake Charmer Song)'. The first staff is in bass clef, 2/4 time, with a key signature of two flats. The melody is characterized by eighth and sixteenth notes. The second and third staves continue the piece with similar rhythmic patterns.

42) Arirang (Korean Folk Song)

Two staves of musical notation for 'Arirang (Korean Folk Song)'. The first staff is in bass clef, 3/4 time, with a key signature of two flats. The melody features a mix of quarter and eighth notes with some rests. The second staff continues the piece with similar rhythmic patterns.